



THE MANDORLETO
BULL COURT, KELOWNA, BC







The Orchard

IN THE MISSION

Taste the good life

The Orchard in The Mission will consist of 103 single-family lots with homes built by a curated collection of experienced builders renowned for quality.

Align West Homes is proud to be building in this community and after receiving the Gold Award for excellence in Interior Décor and Styling, Okanagan Housing Awards of Excellence 2021 for our first showhome in the neighbourhood, we are pleased to have unveiled our new Aspen Grove showhome which is receiving rave reviews.

Exactly where you want to be ...



PROXIMITY

Central Lower Mission location, convenient access to shopping, dining, schools, parks and Kelowna International Airport.



SCHOOLS & PARKS

The Orchard is in perfect proximity to elementary, middle and high schools to meet your family's growing needs plus an abundance of parks and green spaces are close at hand ready for you to come and explore.



SHOP & DINE

Quick access to the new Lakeshore Hub including Sunshine Market, T-Bones, DunnEnzies, It's a Bakery & Barn Owl Brewing and a short drive to Save on Foods and South Pandosy eateries and shopping.



WINERIES & VINEYARDS

With more than 2000 hours of sunshine in the Okanagan valley this area has a distinguished reputation for exceptional wine. There are over 40 wineries to explore and enjoy in Kelowna; you're sure to find gems to stock your wine cellar.



FOUR SEASON PLAYGROUND

A year-round playground beckons from winter downhill to cross country skiing, snowshoeing, 30 golf courses to choose from, hiking and biking trails abound and lake life all summer long. Outdoor adventures await all year long.



NEIGHBOURHOOD

The Orchard in the Mission has a total of two phases and all homes will be single family. Phase one is already substantially built and happy homeowners are already enjoying this budding community. It's your turn to call The Orchard home.

Property Summary

PROPERTY TYPE

Single Family Home

TITLE

Freehold

NEIGHBOURHOOD

The Orchard

PARKING

2 Car Garage & Driveway

BEDROOMS

4

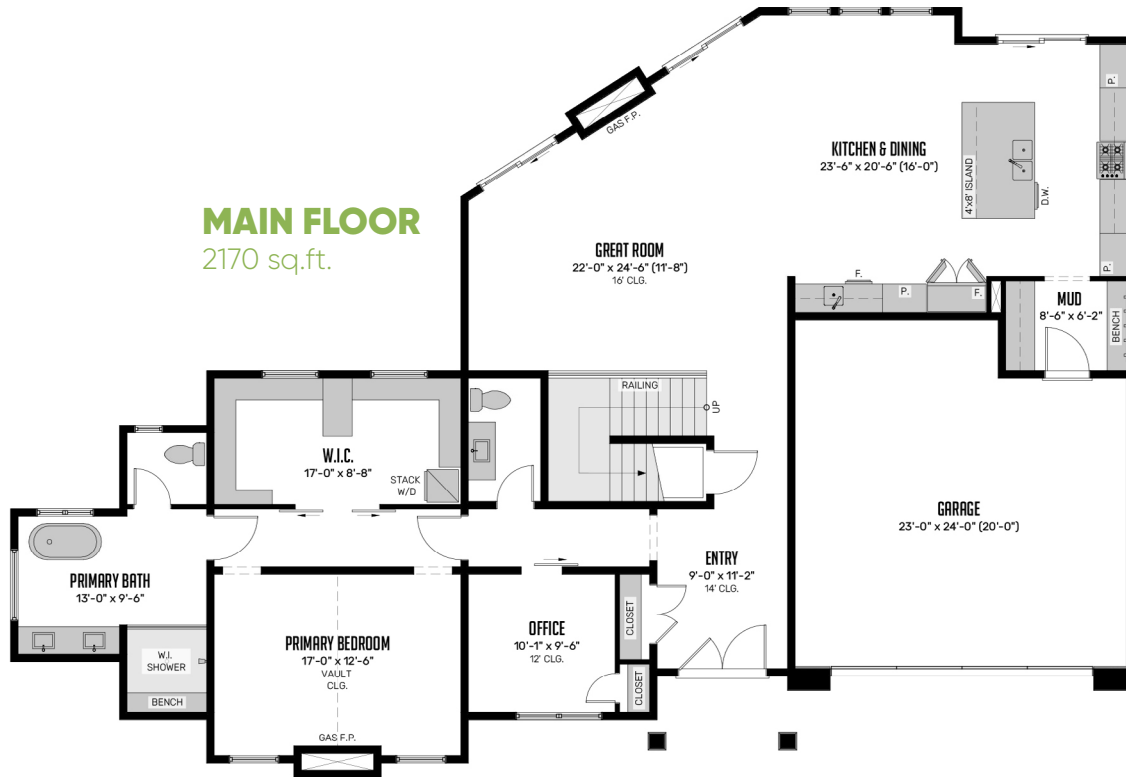
BATHROOMS

2.5

HOME FEATURES WE THINK YOU'LL LOVE

- 2 level family home
- Main level living incorporates great room, kitchen, pantry, dining, office, mudroom and powder room
- Primary wing on the main floor includes, bedroom with gas fireplace, 5 piece ensuite, expansive walk-in-closet with stacking washer and dryer
- Great room with gas fireplace and vaulted ceiling to 16'
- Gourmet kitchen with 8' island and wetbar
- Direct access to outdoor living space and pool area from great room
- 3 bedrooms up plus full bath and laundry room
- Media room on the second level
- Oversized double car garage with storage nook
- This lot will accommodate an in-ground pool
- Sought after central location

SINGLE FAMILY LIVING IN THE DESIRABLE LOWER MISSION



MAIN FLOOR | 2170 SQ. FT.

2ND FLOOR | 1061 SQ. FT.

TOTAL | 3231 SQ. FT.

In a continuing effort to improve our product offering, we reserve the right to modify or change the floor plan and specification without notice. Floor plans are conceptual marketing drawings only. All dimensions and sizes are approximate. E&OE.



Call for additional details

250-764-6859

Info@alignwesthomes.com

In a continuing effort to improve our product offering, we reserve the right to modify or change the floor plan and specification without notice. E&OE.